

# Fat Quarter News



## Hi Friends & Fabric Lovers

THANK; THANKED; THANKING, THANKS: to express gratitude; THANKFUL; grateful, expressing thanks; THANKS: an acknowledgment of a favor, an expression of gratitude; THANKSGIVING: an expression of gratitude to God; THANKSGIVING DAY: a national holiday set apart for giving thanks to God, celebrated on the fourth Thursday of November in the United States and on the second Monday of October in Canada; THANK WORTHY: worthy of thanks; THANK YOU: an expression of gratitude. This information is taken from Webster's dictionary.

Reading the definitions above gives one pause to reflect on some of the reasons we as citizens of this country have every reason to be THANKFUL. The freedom allowed

us to live in houses that keep us warm and dry, keep out the pests and danger, give us space to enjoy our hobbies or privacy from each other when desired, and the right to OWN these homes. The freedom to own and drive our vehicles of our choice. The freedom to move about our country and the world and feel safe and protected while doing so. The freedom to eat when we are hungry, for we certainly live in a land of plenty. The freedom to worship God in our own way. The freedom to pursue pleasures beyond the necessities of daily living. The freedom to vote or not vote and have a voice in the management of the government of this country.

The list could be endless when talking about life in America. This is our national month of Thanksgiving and I think we can all find numerous reasons to express our THANKS in many ways. I

am THANKFUL for the friendship and support you have all shown me this past year, I pray that the upcoming year will find you all staying healthy and happy.

As an aside, while reading the definitions above, I learned a new name for a pot-hole. Apparently, according to Webster they are called THANK-YOU-Ma'am: a bump or hollow in the road.

Till next time, keep quilting, and let's plan to meet AROUND THE CORNER, and we'll peek through the BASEMENT WINDOW where we'll see BOXES, maybe a BIRD'S NEST, a BROKEN WHEEL or perhaps a CROWN. We might find an INSIDE PASSAGE to the WINDOWS AND DOORS that will lead us RIGHT AND LEFT towards NEW HAMPSHIRE'S GRANITE ROCK

Sincerely yours,  
Jeanne B



# November 2006



Sun

Mon

Tue

Wed

Thu

Fri

Sat

			1 Knotty Ladies 11:30-3:00 Senior Center Newport	2 Quilters with a View 10:00 EVERY Thursday Lincoln City 50/50 Club	3 Bayshore Quilters 10-4 Bayshore in Waldport	4
5	6	7 Lincoln County Sewers 10:00 Community Center Lincoln City	8 Knotty Ladies 11:30-3:00 Senior Center Newport	9 Guild Meeting ALC Newport 6:00 PM Table walk 6:30 PM General mtg	10 Hand Appliqué Workshop Patti Kenyon 10-4 ALC Newport	11 Documentation 10-4 Quilts since 1960 Carriage House Newport
12	13	14 Lincoln County Sewers 10:00 Community Center Lincoln City	15 Knotty Ladies 11:30-3:00 Senior Center Newport	16 Board Meeting 11:00 Rec Center Newport ALL members welcome	17 Bayshore Quilters 10-4 Bayshore in Waldport	18
19 Newsletter Deadline	20	21 Lincoln County Sewers 10:00 Community Center Lincoln City	22 Knotty Ladies 11:30-3:00 Senior Center Newport	23 Thanksgiving	24 Bayshore Quilters 10-4 Bayshore in Waldport	25
26	27	28 Lincoln County Sewers 10:00 Community Center Lincoln City	29 Knotty Ladies 11:30-3:00 Senior Center Newport	30 Quilters with a View 10:00 EVERY Thursday Lincoln City 50/50 Club		

# Minutes of General Membership Meeting – October 12, 2006

ATTENDANCE 66 MEMBERS AND 6 GUESTS

President Jeann'e Butler called the meeting to order and noted the absence of our treasurer who is recuperating from surgery. Rosalie introduced the program, Jean Amundson, who presented an interesting and entertaining segment entitled Color Wheels and Association. The social break followed.

When the meeting resumed Berta thanked the October hostess group and Show and Tell began with thirteen participants.

Block of the month followed with Rose Shaw winning, followed by the raffles.

The business meeting followed with the approval of the minutes of the Executive Board Meeting. The treasurer's report was read by the President; reporting a bank balance of \$9,943.33.

The routine committee reports were next with documentation announcing an upcoming session scheduled for November 11, 2006.

Gretchen made a plea to members to "step up to the plate" and volunteer for a position to be filled for the upcoming election. She stated at this time there are openings for President, Treasurer and Secretary.

It was announced Rose Shaw's challenge was selected for the upcoming year and that it is anticipated full details will be in the next newsletter.

Community Quilts announced that 132 have been turned in at this time and more are requested to keep up with the 160 number to match last year's contributions.

The Finance Committee announced that the budget for next year would be presented at the next Board Meeting. A reminder was given that all members are welcome at every Board Meeting.

Jen made a brief report on the March, 2007 Open House and gave an up-date on Healthy Quilters.

Nan Scott announced that she is willing to continue with the newsletter, however if someone will assume those duties she could be free to take an opening for an Officer's Position.

Next month's program will be Patti Kenyon, along with a trunk show.

During the business session, a question was posed regarding the decision to change the location of the Quilt Show from the Middle School to the Fair Grounds. The President enlightened the members regarding recent correspondence with the school.

Paulette reminded all participants that Row Robin is once again due in November.

The President requested a volunteer to assume the duties to take over the subscription duties for Fons and Porter. Joan Thurston was kind enough to take over.

The meeting was adjourned.

*Jean Maupin, Secretary*



Madam President—A woman of many hats!

## HAPPY BIRTHDAY in November

Gretchen Jolie .....	1
Dani Flaig .....	4
Phoebe Hein .....	7
Ann Best .....	9
Alice Campbell .....	9
Cindy McEntee .....	10
Cheryl Mottner .....	10
Fran Whited .....	16
Janet Baldwin .....	21
Esther Vickstrom .....	25



Guild member and workshop co-chair, **Jean Amundson**, helped us visualize color combinations and gave excellent tips on the use of color to add depth, dimension, contrast and interest to our quilts. Our thanks go to Jean and the program co-chairs, **Rosalie Raudsep** and **Jan Hoffman**, for presenting such an informative and entertaining program.

## Hostess Notes

### October

Sally Morris  
Marilyn Pratt  
Phyllis Wanamaker  
Joan Johnson

### THANK YOU!

### November

Jean Amundson  
Darcy de la Rosa  
Linda Goebel

Berta Beachell

## Minutes of Executive Board Meeting – October 19

President Jeann'e Butler called the meeting to order with 17 members present. Minutes of the September 21, 2006 executive board meeting were approved as written in the Newsletter.

The President gave the Treasurer's Report.

Committee reports began with Block of the Month, followed by the upcoming Challenge, Charm Squares, & Community Quilts. A Motion was made to allow \$299 from the emergency contingency fund to be utilized, for Community Quilts Committee, if the need arises in lieu of the pending grant. The Motion passed.

Documentation was next, mentioning an upcoming date of November 11, 2006, followed by finance. A Motion was made and amended to add a sub committee for the raffle ticket sales at the Quilt Show. The Motion carried.

Jen mentioned she is open to suggestions for a name change for the Healthy Quilters. A brief discussion followed. Berta stated she is compiling a list of instruction, which will be posted on the web for details of the hostess job. Pam again requested all library books to be checked in at the November General Meeting for an inventory. The membership committee had reported that the Guild now has 132 members.

Nan stated the Newsletter has space for additional advertisers. Rosalie said the workshop this month will be Piece of Cake and complimented Jean Amundson for her dedication.

Jen, representing the Quilt Show Committee for the present year, stated the contract has been signed for the Fair Grounds for the 2007 show. She outlined the cost comparison and mentioned the problems with the school this year.

Quilters Surprise Raffle reported revenue of \$69 this month. Pam mentioned she has been averaging approximately \$30/month at the Special Raffle.

Gretchen discussed the difficulties she is experiencing in acquiring an

adequate pool for the upcoming election. A brief discussion followed regarding potential members and positions.

New Business opened with Rosalie making a presentation regarding a donation to assist the Lincoln County Sheriff's Department in purchasing digital video cameras for the patrol cars. A discussion followed and it was decided that the issue could be discussed later.

Nan, representing the finance committee, proposed an increase of membership dues to \$20. A discussion followed. Jen suggested the dues be increased 25%. A Motion was passed to raise the 2007 dues to \$20 per year.

The proposed budget was presented; a discussion followed by some adjustments being made and a motion was made and carried which approved the amended budget.

The proposal for the meeting time change was next on the agenda and Nan gave the statistics, which 73 ballots reflected. As per the majority vote a Motion was made and passed to change the meeting times from noon to 1:00 p.m. and the months of November, December and January to be day time meetings, with the rotation evening meetings to stay the same as previously held, i.e. night meetings to begin at 6:30 p.m. The exception will be the May and December meetings which are potlucks and will begin at noon. Jen mentioned she would be contacting the workshop teachers and reporting if all will be able to adjust their schedules accordingly.

A proposed letter to the Middle School regarding the problems and issues surrounding the facility at the 2006 Quilt Show was read. Suggestions were made and it was determined the letter will be adjusted and the President will be working with the author on revisions.

The meeting was adjourned.

*Jean Maupin, Secretary*

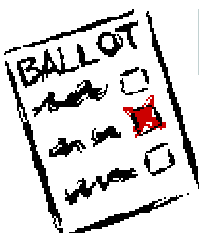
## Treasurer's Report

December 1—October 18

	<u>Budget</u>	
<b>Income</b>		
Advertising	676.00	550.00
2006 Raffle Quilt Tickets	3,199.05	2,650.00
Documentation	415.00	450.00
Donations	2,500.00	2,500.00
Field Trips	0.00	650.00
Membership	2264.25	1,980.00
Quilt Show	7,381.81	5,900.00
Quilter's Surprise	658.00	440.00
Workshops	2,291.00	3,450.00
Miscellaneous	268.30	695.00
<b>Total Income</b>	<b>19,653.41</b>	<b>19,265.00</b>
<b>Operating Expenses</b>		
Donations	0.00	700.00
Filing Fees	0.00	50.00
Friendship	0.00	50.00
Insurance	300.00	305.00
Officers Supplies	0.00	125.00
Organizational Expenses	0.00	50.00
Post Office Box Rent	40.00	40.00
Rent-Meetings	600.00	600.00
Rent - Lincoln Storage	0.00	900.00
Round Robin	65.07	150.00
Treasurer's Expenses	42.12	100.00
Misc. Expense-Unbudgeted	0.00	100.00
<b>Total Operating Expenses</b>	<b>1,047.19</b>	<b>3,170.00</b>
<b>OCQG Committee Expenses</b>		
Block of the Month	328.29	450.00
Bylaws and Procedures	1.05	30.00
Challenge	97.81	110.00
Community Service	2,048.99	2,500.00
Documentation	332.97	250.00
Field Trips	0.00	700.00
Finance -Quilters Surprise	551.52	440.00
Historian	0.00	100.00
Hospitality	85.96	150.00
Library	142.99	250.00
Membership	406.05	300.00
Newsletter	1,159.73	1,500.00
Program	1,066.67	1,500.00
Publicity	0.00	25.00
Raffles - 2006 Raffle Quilt	250.98	275.00
Raffles - 2007 Quilt	124.38	400.00
Quilt Show 2005	153.92	
Quilt Show 2006	4,698.17	3,315.00
Workshops	1,930.74	3,800.00
<b>Total OCQG Committee Expenses</b>	<b>13,380.22</b>	<b>16,095.00</b>
<b>Total Expense</b>	<b>14,427.41</b>	<b>19,265.00</b>
	<b>5,226.00</b>	<b>0.00</b>
Bank Balance	\$9,284.12	
Community Service	\$451.01	

## Election of Officers at November Meeting

Officers for the new year will be elected at the November meeting. Call Gretchen Jolie to volunteer. PLEASE step up to fill these important positions so that the Guild can continue. WE NEED YOU!



## Workshops to Challenge and Stretch Us

### HAND APPLIQUÉ THE PIECE O' CAKE WAY

Friday, November 10, 10-4 at ALC  
- WORKSHOP IS FULL

### NAUTILUS

Friday & Saturday, January 12 & 13, 9:30-4:30 at ALC. Instructor: Barbara Shapel. \$58 plus \$14 Pattern Fee. Skill Level: All. The Nautilus shell is one of nature's perfect examples of the Divine Phi, where each chamber is exactly 1.618 larger than the previous chamber. All the math has already been done for you in this contemporary fiber art pattern. We will use freezer paper, along with invisible monofilament thread and the zigzag stitch on your sewing machine to appliqué each chamber to your background fabric. This technique makes this complex looking pattern a cinch to make! We will also discuss machine quilting techniques to enhance your finished project.

### MAGIC MIRROR STACK-N-WHACK

Saturday, February 10, 9:30-4:30 at ALC. Instructor: Nan Scott. \$19.67 plus Pattern Fee: Blossoms pattern can be printed off the internet for \$0 or receive a good copy for \$5, the Butterfly pattern requires the "Stack-n-Whackier Quilts" book by Bethany Reynolds. Commit to the book no later than the November guild meeting and pay only \$15 or purchase the book on your own. Skill Level: Intermediate. Using

a Bethany Reynolds' design, participants will learn how to align and cut fabric using the Stack-n-Whack method. Traditional Stack-n-Whack designs have radial symmetry which means that they appear to rotate around the center of the block. Another type of symmetry is bilateral symmetry in which the design is mirrored on either side of a center line. By using both the front and the back of a fabric, participants can create this mirror-image effect without selective cutting. The back side of the fabric not only provides bilateral symmetry, but also gives the illusion of motion. From a single fabric, participants will create several unique butterflies or blossoms. There will be time to construct block kits and piece several blocks. The finished butterfly quilt is 54" x 47" and the Blossom quilt is 41" x 41 1/2" - or use elements of both and design your own project.

### CELTIC TWIST

Saturday, March 10, 9:30-4:30 at ALC. Instructor: Marlene LaMarche. \$43. Skill Level: All. Learn invisible appliqué, work with bias bars and learn to sew gentle curves while making this quilt. Your machine must be able to do blind hem stitch and be in good working condition as you use invisible thread. I will guide you to success in making a fabulous Celtic Twist!

Questions?

Call Jennifer Reinhart 265-9498

## Workshop Cost Reduced

Beginning in January, the Executive Board has authorized two ways to bring the cost of workshops down to a more affordable level for guild participants.



Rather than prorating workshop costs over 10 students, the minimum number of participants, they will be divided among 15. After members have had an opportunity to sign up, workshops will be advertised to the public who will pay a higher price.

In addition, each member may take a once a year discount of \$10 off any workshop of their choice.

If the price is still out of range, why not make a community quilt or two and use the payment to further reduce your cost while making a difference in your community? That's a WIN-WIN situation.

You will want to sign up for your favorite workshop early because as with the November workshop, they are likely to fill fast.

## Wanted: Christmas Quilts

Please contact me if you have any wall hanging size Christmas quilts that you are willing to display at the Newport Rec Center from mid-November thru December. I will need about 7 of them. We receive free use of a room for the Board meetings with this service. I have had many volunteers this year getting quilts to display and thanks to those that have helped. I am also looking for a volunteer to be in charge of this service next year. It only involves about 6 changes a year and you just collect the quilts, take them to the Rec Center (they hang them), and return the retiring quilts. You can exchange quilts at the monthly meeting to save trips. Please let me know if you are interested.

Jane Szabo, 563-4726,  
[szaboji@peak.org](mailto:szaboji@peak.org)

## Jean Amundson Teaches Cut-Work Workshop



Many of us admired Jean Amundson's cut-work vest when she entered it in the 2005 Quilt Show. At the workshop in October, Jean guided a dozen or more members in the construction of a unique garment.

The cutting in preparation kept us busy, but the finished garments should be stunning.

Stay tuned for a future Show and Tell. Thank you, Jean for sharing your expertise.

## Piece 'o Cake Trunk Show is November Program

Patti Kenyon will be presenting a "A Piece of Cake" trunk show at our last night meeting this year on November 9th. We hope you will join us. This will be the end of Rosalie's 4 years and Jan's 3 years as program co-chairs. Jan has been wonderful to work with during this time. Thanks to those who supported and helped us.

Rosalie and Jan

Darcy de la Rosa experiments with placement.

# Buy your ticket to win

## November Nifty Notion



Quilter's Surprise notion for November is the Bo-Nash Iron Shoe. This product is a favorite new tool. The Iron Shoe just attaches to your iron and it will allow you to iron on

anything and I mean ANYTHING. Velvets are now a cinch to iron....and delicate fabrics, no problem. Eliminate the need for a press sheet with this brand new notion.

*Jane Szabo*



Denise DeMarie thought the October Nifty Notion of quilting thread was tops while Roselie Raudsep had the winning ticket for the Quilters Surprise.

## Helping Hands aka Healthy Quilters

Helping Hands is the new and improved name of Healthy Quilters. In 2007 it will be a place where there are Quilters Helping Quilters! Helping Hands and Community Quilts will pair up to share the PUD for six Saturday's next year. You are welcome to come tie community quilts, make a community quilt, or participate in an organized "free workshop" by the Helping Hands committee. Or, if you just need help on your current project or just don't know how to get started please join us! Members of the guild are here to help! The following is the schedule for 2007:

Date	Topic
January 20	Fun Mystery Workshop! - you only pay \$5.00 for the pattern!
February 17	Hand or machine appliqué the heart block in the Guild Directory
June 23	Community Quilts Workshop - getting tops ready for the Quilt Show
September 22	Learn and practice the process of Hand Quilting
October 20	Community Quilts Workshop - Fun & Easy Scrappy Charm Squares Workshop

*Jennifer Reinhart*



## LIBRARY

*Please return all library books to the Guild Library at the November meeting. This is so we can account for all books and do any needed repairs.*

*Thank You,  
Pam and Gretchen*

## Challenge Quilt 2007

In keeping with the theme of the 2007 raffle quilt, the challenge . . . should you accept, is a wall hanging to reflect **your favorite pass time** in your home i.e. reading, walking the dog, gardening, playing with grandchildren, even quilting! The wall hanging must show a "room" or a portion of the house. It should be no larger than 20" x 25" (either direction is fine). It must have a dog or cat, even if you are allergic to them, in the wall hanging. You can embellish to your heart's desire (it's your quilt!). Don't forget to add a hanging sleeve.

Pin a card with the name of the quilt on the front lower right corner. Have your name on the back of the wall hanging. Bring your wall hanging to the June 2007 meeting in a brown paper bag. We'll vote on them at the June and July meetings.

It would be fun to see twice as many challenge quilts as in years past, so get energized (with chocolate?) and accept this challenge!

*Thanks,  
Rose Shaw*



# October Show and Share



From antiques to Block of the Month completions—baby quilts to buzz saws and beautiful things in between—What talent to share!

Florence Roberts



Gretchen Jolie



Laura Martin



Fran Whited  
Lisa Taylor  
Shirley Scott





Susan Whittemore



Dolores Thomas for Jennifer Reinhart

Dianne Eckestein



Twy Hoch

Denise DeMarie



Paulette Stenberg



Darcy de la Rosa



## Special Projects

Thank you for all of the great donations that have been given to the Special Projects Raffle. Everyone has been great at supporting our Guild by their donations.

Remember, we have a great Snowman Wall Hanging to raffle off at our December Luncheon. Tickets are \$1. Time is running short to purchase your chance for this great wall hanging.

*Pam and Gretchen*

**If you would like a copy of the CD containing photo slide shows of the 2006 Quilt Show, please let Nan Scott know. The CD contains 5 Quick-time slide shows with music for a cost of \$3.00**

## - - - In Stitches - - -

Here are a couple of 'smiles' for you just in time for the holidays ...

### The Pasta Diet

- 1) You walka pasta the bakery.
- 2) You walka pasta the candy store.
- 3) You walka pasta the Ice Cream shop.
- 4) You walka pasta the table and fridge.

And for those of you who watch what you eat, here's the final word on nutrition and health. It's a relief to know the truth after all the conflicting medical studies:

1. The Japanese eat very little fat and suffer fewer heart attacks than Americans.
2. The Mexicans eat a lot of fat and suffer fewer heart attacks than Americans.
3. The Chinese drink very little red wine and suffer fewer heart attacks than Americans.
4. The Italians drink excessive amounts of red wine and suffer fewer heart attacks than Americans.
5. The Germans drink a lot of beer and eat lots of sausage and suffer fewer heart attacks than Americans.

**CONCLUSION:** Eat and drink what you like. Speaking English is apparently what kills you.

## Ballots are Counted—Meeting Time Change

Denotes Day Meeting

Denotes Evening Meeting

December 11:30 AM 12:00 N	Potluck Luncheon Table Walk Program
January 1:00 PM 1:30 PM	General Meeting Table Walk Program

February 6:00 PM 6:30 PM	General Meeting Table Walk Program
--------------------------------	------------------------------------------

March 1:00 PM 1:30 PM	General Meeting Table Walk Program
-----------------------------	------------------------------------------

April 6:00 PM 6:30 PM	General Meeting Table Walk Program
-----------------------------	------------------------------------------

May 11:30 AM 12:00 N	Potluck Luncheon Table Walk Program
----------------------------	-------------------------------------------

June 6:00 PM 6:30 PM	General Meeting Table Walk Program
----------------------------	------------------------------------------

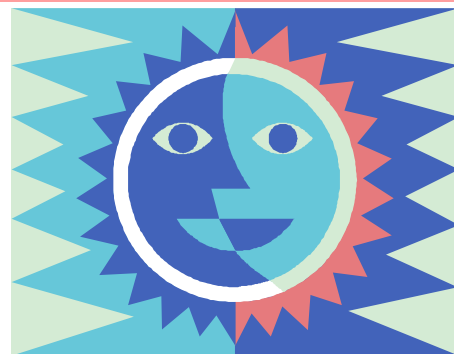
July 1:00 PM 1:30 PM	General Meeting Table Walk Program
----------------------------	------------------------------------------

August 6:00 PM 6:30 PM	General Meeting Table Walk Program
------------------------------	------------------------------------------

September 1:00 PM 1:30 PM	General Meeting Table Walk Program
---------------------------------	------------------------------------------

October 6:00 PM 6:30 PM	General Meeting Table Walk Program
-------------------------------	------------------------------------------

November 1:00 PM 1:30 PM	General Meeting Table Walk Program
--------------------------------	------------------------------------------



Thank you to everyone who participated in the meeting time decision. Seventy-three members submitted ballots and there was a clear majority for a shift of the day time meeting to 1:00 and to day time meetings during the months of November, December, and January. The results of the tally were 39 in favor of 1:00 PM and afternoon winter meetings; 14 in favor of 9:30 AM and morning winter meetings; 19 in favor of making no changes; and 1 write-in vote for all meetings to be day time meetings.

December and May have been designated for potluck luncheons so meeting times for those months will remain at 11:30 for Table Walk and 12:00 for General Meeting. By moving the spring luncheon to May, we hope that more of our 'Snow Birds' will have returned.

The time shift will move us away from the lunch hour making it easier for hostesses and for those members who have strict dietary requirements. Day time meetings during the darkest winter months will provide more traveling safety for those who come from a distance.

The meeting time change will go into effect in December with the start of our new fiscal year. Please note, the next meeting in November will be an **Evening Meeting**.

**BALLOT**  
 ✕ (19) No change  
 ✕ (14) 9:30 AM + NDJ  
 ✕ (39) 1:00 PM + NDJ



## Membership Renewal

The new guild fiscal year will begin December 1st. In November, the membership committee will be accepting renewals and dues for the new year.

The yearly dues have been increased to \$20 to cover current cost of membership including newsletter printing and mailing, directory printing and mailing, web hosting, membership pin and nametag. The dues support membership only and are not used for programming or other guild activities. The benefits are direct to you whether you attend meetings or not.

When you consider that every member also now gets a once a year \$10 discount on a workshop of choice, this is a heck of a deal!

To renew your membership, please clip and complete the renewal form on the pink pages in the back of your 2006 Membership Directory. Mail or bring the form and your dues to the November meeting and enjoy another exciting year in the best guild around! Dues are delinquent after the January General Membership meeting.



## Money Matters

The proposed budget to the right was adopted by the Executive Board at the October meeting. The budget is a balanced budget which means that expected income equals expected expenses.

Some of you may have noticed that the monthly Treasurer's Report contains a line indicating the current bank balance. Over the year that balance has ranged from approximately \$4,000 to more than \$10,000. We've got plenty of money in the bank, so why are we increasing the annual dues?

The answer lies in the fact that income and expenses are not realized at an even level throughout the year. We must have money in the bank to cover the checks that are written each month regardless of whether or not there is any income that month. In addition, good fiscal planning sets aside a contingency in case of unbudgeted expenses or unrealized income.

## 06 Budget 07 Budget D \$ 06 vs 07

### Income

Advertising	550	700	27%
Current Raffle Quilt Tickets	2,650	3,000	13%
Documentation	450	400	-11%
Donations	2,500	2,500	0%
Field Trips	650	600	-8%
Membership	1,980	2,500	26%
Quilt Show	5,900	7,000	19%
Quilter's Surprise	440	700	59%
Workshops	3,450	3,735	8%
From Contingency		150	
Miscellaneous	695	332	-52%
<b>Total Income</b>	<b>19,265</b>	<b>21,617</b>	<b>12%</b>

### Expenses

#### Operating Expenses

Donations	700	700	0%
Filing Fees	50	50	0%
Friendship	50	50	0%
Insurance	305	350	15%
Officers Supplies	125	75	-40%
Organizational Expenses	50	50	0%
Post Office Box Rent	40	40	0%
Rent-Meetings	600	600	0%
Rent - Lincoln Storage	900	1,020	13%
Treasurer's Expenses	100	75	-25%
Misc. Expense-Unbudgeted	100	75	-25%

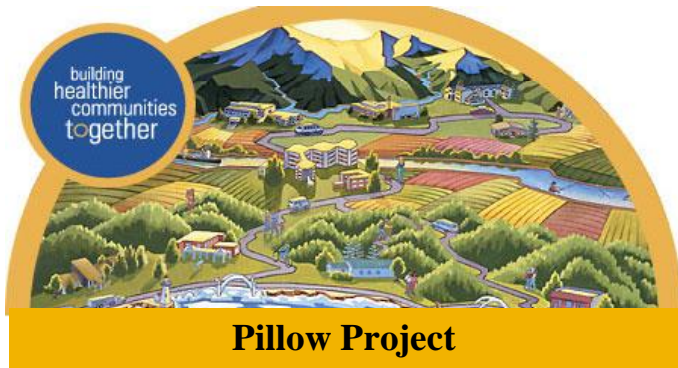
<b>Total Operating Expenses</b>	<b>3,020</b>	<b>3,085</b>	<b>2%</b>
---------------------------------	--------------	--------------	-----------

#### OCQG Committee Expenses

Block of the Month	450	500	11%
Bylaws and Procedures	30	10	-67%
Challenge	110	110	0%
Community Service	2,500	2,500	0%
Documentation	250	250	0%
Field Trips	700	600	-14%
Finance -Quilters Surprise	440	540	23%
Historian	100	100	0%
Hospitality	150	150	0%
Library	250	200	-20%
Membership	300	550	83%
Newsletter	1,500	1,500	0%
Open House/Healthy Quilters		145	
Program	1,500	1,602	7%
Publicity	25	25	0%
Raffles - Current Quilt	275	280	2%
Raffles - Future Quilt	400	400	0%
Round Robin	150	150	0%
Quilt Show Previous			
Quilt Show Current	3,315	4,600	39%
Workshops	3,800	4,320	14%

<b>Total OCQG Committee Expenses</b>	<b>16,245</b>	<b>18,532</b>	<b>14%</b>
--------------------------------------	---------------	---------------	------------

<b>Total Expenses</b>	<b>19,265</b>	<b>21,617</b>	<b>12%</b>
<b>Net Income</b>	<b>0</b>	<b>0</b>	



## Pillow Project

Congratulations to all of the guild members who have been producing pillows.

It is inspiring to see how many members are making them and to see many of them turned in at our meeting. I believe I've been less than clear regarding the labels. Labels need to be attached to the back of the pillows. You can get them from Judi Cooper or me. They require pressing to turn under the raw edges and tacking or blind stitching to attach them. I apologize for any confusion on this subject. Our policy on how to get them to the hospital has evolved a bit also. As always, you can turn them in to Community Quilts at the meeting. Or if you prefer, you can drop them off yourself at the hospital gift shop, Mondays through Fridays 10-4 (avoid the lunch hour) as long as you make sure to report to Community Quilts how many you have delivered because we want to keep track on a monthly basis. I will bring the stuffing to the monthly meeting but if you need some at other times, Quilters Cove is housing our supply in their classroom. Thank you for supporting this program.

*Anne Hendrickson*

## Upcoming Events (non Guild)

Ongoing—11/19 Latimer Quilt & Textile Center; 2105 Wilson River Loop Road, Tillamook, OR; Exhibit of Susie Liles draw loom weaving—Triple Layer Weave Structures. Tuesday-Saturday 10-5. Admission \$2.50 or \$2.00 for seniors.

11/10-11 Coastal Hills Quilt Show Willamina, Oregon, 10 AM to 5 PM; 8th Annual Quilt Show and Sale put on by the Coastal Hills Quilters, Free door prize quilt! Contact: Cris Darr 504-876-3843

11/18 Hands & Hearts Quilt Auction (Proceeds benefit Northwest Medical Teams International) 6 PM to 9 PM; Red Lion Hotel on the River at Jantzen Beach. Admission is Free. For more information or to make a donation please visit our website at [www.handsandheartsequiltauction.com](http://www.handsandheartsequiltauction.com).

Beginning 11/21 Latimer Quilt & Textile Center; 2105 Wilson River Loop Road, Tillamook, OR; Antiques from Latimer collection. Tuesday-Saturday 10-5. Admission \$2.50 or \$2.00 for seniors.

## Community Quilts—Making a Difference



Hooray! Wonderful! Awesome!... These are some of the words I've heard this month as we dropped off several quilts to our various agencies. The list is long but worth noting:

Birthright, My Sister's Place, Lincoln County Health Nurse, ICW (Indian Child Welfare), Samaritan House, New-

port Rehab, Lincoln County Foster Children and Sentilla, the Lincoln County School Advocate (homeless schoolchildren).

We have made a major difference in many lives – especially children. I cannot express enough, the gratitude we all feel as they relay stories regarding these

quilts. We Thank You! Our Community is a better place because of your generosity.

This month we'd like to thank **Paulette Stenberg, Suzanne Dandoy, Barb Martin, Mary Gilliland, Dolores Wagner, Shirley Scott, Rosalie Raudsep and Florence Roberts!** Your quilts are already bringing joy to those in need.

Thank you to all who have donated pillows to the Hospital Auxiliary – they are very appreciative for the extra help with their endeavor. There is extra pillow stuffing available at Quilter's Cove so let's keep 'em coming!!

Our funds are getting low with the reimbursement program so keep in mind we always accept 'donated' quilts.

Thanks Again for your support!

*-Gretchen Jolie  
and the Community Quilts Committee*



MSP is an interactive community committed to eradicating domestic violence. We provide safe, confidential shelter; programs; education; and advocacy for battered women and their children. Our goal is to empower women to take control of their own lives.

Celeste Alexander of Seal Rock joined the guild at the October general meeting bringing our membership total to 132. Introduce yourself the next time you see her. You will be glad you did.



## Directory Additions—New Member

Celeste Alexander

## Directory Corrections or Changes

Denise DeMarie

Maxine Lee

Jeanie Singler

Jane Szabo

Pam Werth



Judy Butts of Newport has been a member of the guild since March, but it wasn't until October that I tracked her down for a picture. She is another who brings vitality to our guild and one you will want to get to know.

I'm Sew Happy Quilting

Professional Machine Quilting  
Simply the Best!

Jennifer Reinhart

imsewhappyquilting@msn.com • 541.265.2490 • Newport, OR

# QUILTER'S COVE

644 SW Coast Highway | Newport  
541-265-2591 or  
Toll free: 1-866-43-QUILT

Enjoy the convenience and benefits of shopping online: [www.quilterscove.net](http://www.quilterscove.net) Great bargains await!

The Cove has scheduled some UFO Days for all who have projects begging for completion. Sign up at the Cove and bring your project on a Sunday from 11:00 AM to 4:00 PM to the classroom and get a boost from being with other quilters. Be sure to sign up for November 19th, December 3rd or 10th.

The Lighthouse Quilting Circle has moved their meetings to the classroom space at Quilter's Cove. This is a group who meets on the first and third Thursday evenings of each month from 5:30 PM to 7:30 PM to share ideas and work on projects. All quilters are welcome.

# Joy of Quilting

FABRIC ♥ NOTIONS ♥ BOOKS & PATTERNS ♥ CLASSES  
2970 Hwy 101, PO Box 1187, Florence, OR 97439  
541-902-8863 Fax 541-902-8864 joy@oregonfast.net

Stop by for a cup of coffee, a piece of chocolate, and a warm welcome!



**October  
Block of the Month  
WINNER!!!**  
Rose Shaw won the cat blocks

## Charm Squares

Please bring 14 (fourteen)  
in plaid  
100% cotton, washed  
7 inch squares



**General Meeting  
November 9  
6:00 Table Walk  
6:30 Meeting**

## **Remember to Bring:**

**Membership Renewal  
\$20 for dues  
Your name tag  
Library Books  
ROW ROBIN  
Block of the Month  
Charm squares  
Money for Raffles  
Show & Share**



**November Block of the  
Month  
Greek Cross**

Instructions are on the web  
[www.oregoncoastalquilters.org/blocks.htm](http://www.oregoncoastalquilters.org/blocks.htm)

**Happy  
Thanksgiving**

# Fat Quarter News

**Oregon Coastal Quilters Guild**

P.O. Box 382

South Beach, OR 97366

[www.oregoncoastalquilters.org](http://www.oregoncoastalquilters.org)

## Fat Quarter News

Editor: Nan Scott

PO Box 1118 Yachats OR 97498

Phone : 541-547-5470

[Nan.H.Scott@oregonstate.edu](mailto:Nan.H.Scott@oregonstate.edu)

Your November issue is here!